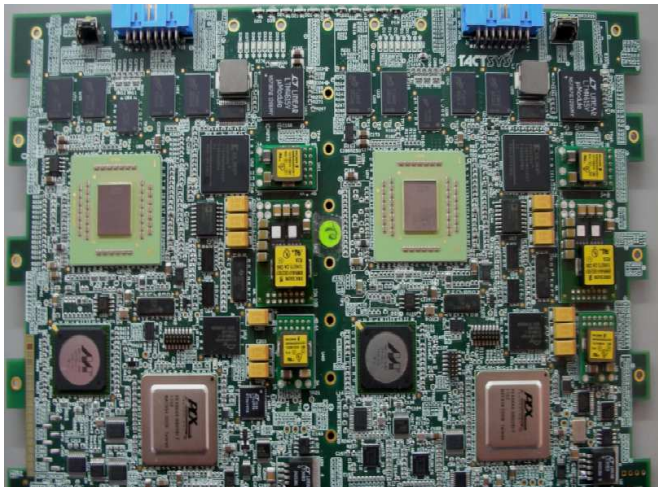


MPC8640

TactSys's 6U VPX SBC based on the Freescale MC8640D (MPC8640) Integrated Dual-Core Processor with on-chip, high speed L1 and L2 caches. Memory resources include large and fast DDR2 SDRAM, NOR Flash for firmware, user application and data storage. Integrated on-board I/O resources includes Gigabit Ethernet, USB 2.0 ports, serial ports, and general-purpose discrete I/O channels.



Ordering Information
Part Number 2010-0002-00

MPC8640 SBC

- Powerful general-purpose single board computer with Freescale 8640 PowerPC processor
- Configuration of Single or dual processor
- e600 cores at up to 1.3GHz : Single or Dual core available
- Up to 2 GB DDR2 SDRAM controlled by dual 64-bit controllers
- I/O capability : Ethernet (10/100/1000), I2C, serial, USB 2.0, Serial ATA, TTL and differential discretes)
- Single x4 routed to backplane through PLX8548 switch
- Software
 - Ported LynxOS
 - Ported VXWorks 6.7

This board is ideal for harsh environment, military and commercial applications.

TACTICAL SYSTEMS

1503 Constant CT.
San Jose,
CA 95129
Phone: (408) 216-7027

#12, 2nd Floor, 13th Main
Vasanthnagar
Bangalore 560 032
Phone 91 80 4112 0887

MPC8640

Specifications

- Rugged 6U VPX Single-Slot SBC
- Freescale MPC8640D Processor (Single and dual core option available)
 - Dual e600 Cores @1.25GHz
 - 64kB L1 & 1MB L2 Cache per Core
- Memory
 - 2 GB DDR2 SDRAM with ECC (Dual Channel)
 - 2GB NOR Flash Memory
- Multiple Backplane Interface Options
 - 4 lane PCIe through PLX8648 switch
- I/O Interfaces
 - 4 Gigabit Ethernet Ports
 - 2 USB 2.0 Ports
 - 8 Asynchronous Serial Ports Supporting RS-232/422/485
- System Resources
 - On Chip four 32 bit counters per core and two 32 bit counters in CPLD
 - Real Time Clock
 - Two On-Board Temperature Sensors

MPC8640

